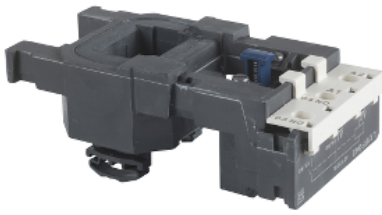


# Product datasheet

Specifications



## TeSys F - contactor coil - LX1FF - 24 V AC 50 Hz

LX1FF024

! Discontinued on: 05 June 2018

! Discontinued

### Main

Range	TeSys
Product or component type	Contactor coil
Device short name	LX1FF
Range compatibility	TeSys (TeSys F) LC1F contactor
Product compatibility	LC1F150 LC1F115
Control circuit type	AC at 50 Hz
[Uc] control circuit voltage	24 V AC 50 Hz
Inductance of closed circuit	0.04 H
Average resistance	0.27 Ohm at 20 °C
Operating time	23...35 ms closing 5...15 ms opening
Mechanical durability	10 Mcycles
Maximum operating rate	2400 cyc/h 55 °C

### Complementary

Coil technology	Without built-in suppressor module
Control circuit voltage limits	Drop-out: 0.35...0.55 Uc 50/60 Hz (at 55 °C) Operational: 0.85...1.1 Uc 50/60 Hz (at 55 °C)
Inrush power in VA	550 VA 50 Hz cos phi 0.3 (at 20 °C)
Hold-in power consumption in VA	45 VA 50 Hz cos phi 0.3 (at 20 °C)
Heat dissipation	12...16 W at 50 Hz

### Environment

Ambient air temperature for operation	-5...55 °C
Net weight	0.43 kg

### Packing Units

Unit Type of Package 1	PCE
------------------------	-----

Number of Units in Package 1	1
Package 1 Height	7.0 cm
Package 1 Width	8.0 cm
Package 1 Length	16.0 cm
Package 1 Weight	480.0 g
Unit Type of Package 2	S03
Number of Units in Package 2	14
Package 2 Height	30.0 cm
Package 2 Width	30.0 cm
Package 2 Length	40.0 cm
Package 2 Weight	7.433 kg

## Offer Sustainability

Sustainable offer status	Green Premium product
REACH Regulation	<a href="#">REACH Declaration</a>
REACH free of SVHC	Yes
EU RoHS Directive	Pro-active compliance (Product out of EU RoHS legal scope) <a href="#">EU RoHS Declaration</a>
Toxic heavy metal free	Yes
Mercury free	Yes
RoHS exemption information	<a href="#">Yes</a>
China RoHS Regulation	<a href="#">China RoHS declaration</a>
Environmental Disclosure	<a href="#">Product Environmental Profile</a>
Circularity Profile	<a href="#">End of Life Information</a>

## Contractual warranty

Warranty	18 months
----------	-----------

## Recommended replacement(s)