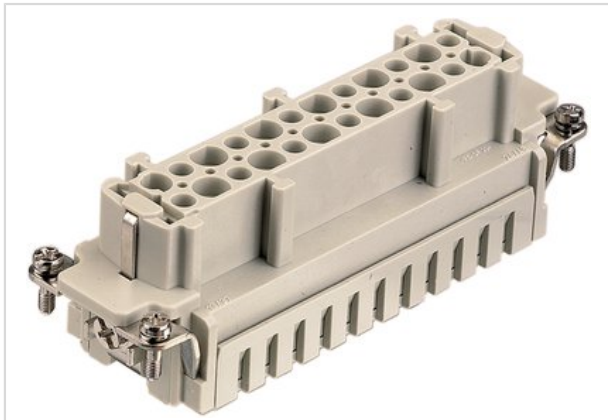


## Han 24 ES Insert-F



Part number	09 33 024 2716
Specification	Han 24 ES Insert-F
HARTING eCatalogue	<a href="https://b2b.harting.com/09330242716">https://b2b.harting.com/09330242716</a>

### Identification

Category	Inserts
Series	Han <sup>®</sup> ES

### Version

Termination method	Cage-clamp termination
Gender	Female
Size	24 B
Number of contacts	24
PE contact	Yes

### Technical characteristics

Conductor cross-section	0.14 ... 2.5 mm <sup>2</sup>
Conductor cross-section	AWG 26 ... AWG 14
Rated current	16 A
Rated voltage	500 V
Rated impulse voltage	6 kV
Pollution degree	3
Rated voltage acc. to UL	600 V
Rated voltage acc. to CSA	600 V
Insulation resistance	> 10 <sup>10</sup> Ω
Contact resistance	≤3 mΩ
Limiting temperature	-40 ... +125 °C
Stripping length	7 ... 9 mm



Pushing Performance

## Technical characteristics

Mating cycles	≥500
---------------	------

## Material properties

Material (insert)	Polycarbonate
Colour (insert)	RAL 7032 (pebble grey)
Material (contacts)	Copper alloy
Surface (contacts)	Silver plated
Material flammability class acc. to UL 94	V-0
RoHS	compliant with exemption
RoHS exemptions	6c: Copper alloy containing up to 4 % lead by weight
ELV status	compliant with exemption
China RoHS	50
REACH Annex XVII substances	No
REACH ANNEX XIV substances	No
REACH SVHC substances	Yes
REACH SVHC substances	Lead

## Specifications and approvals

Specifications	EN 60664-1 IEC 61984
Approvals	DNV GL
UL / CSA	UL 1977 ECBT2.E235076 UL 2237 PVVA2.E318390 CSA-C22.2 No. 182.3 PVVA8.E318390

## Commercial data

Packaging size	1
Net weight	120.24 g
Country of origin	Germany
European customs tariff number	85366990
eCl@ss	27440205 Contact insert for industrial connectors