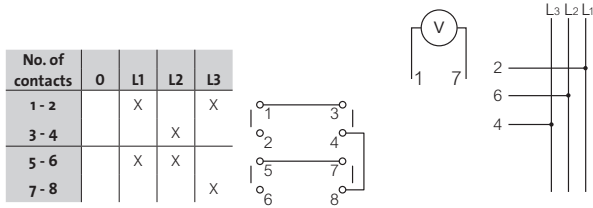


# Cam switches

 Characteristics (p. 213)

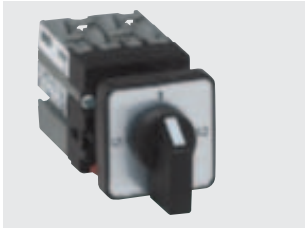
## ► VOLTMETER SWITCH, WITHOUT NEUTRAL



**MINI CAM SWITCH - 10 A (AC21)**

**∅ 16 or 22 single hole front mounting**

Cat. No.



223527

- 30 aluminium plate and frame
- 1 network, 3-phase without neutral
- 1 voltmeter

4 contacts



**223527**

