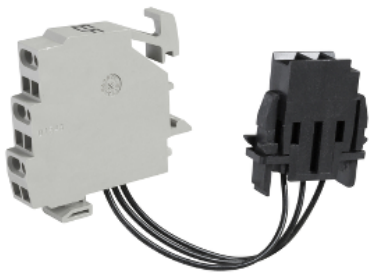


Product data sheet

Specifications



auxiliary contact - NO/NC - 5 A - 240 V - for drawout Masterpact NW

48477

Main

Device short name	EF contact
Product or component type	Auxiliary contact
Device application	Control
Range compatibility	MasterPact NW
Signal contacts composition	1 NO/NC

Complementary

Auxiliary contacts type	Standard
Auxiliary contacts operation	Connected position
Mounting mode	Drawout
[Ie] rated operational current	AC-12: 6 A at 690 V AC 50/60 Hz DC-12: 0.3 A at 250 V DC DC-12: 0.8 A at 125 V DC DC-12: 2.5 A at 24/48 V DC AC-12: 6 A at 240/380 V AC 50/60 Hz AC-12: 6 A at 480 V AC 50/60 Hz
Minimum load	100 mA at 24 V

Packing Units

Unit Type of Package 1	PCE
Package 1 Length	14.5 cm
Number of Units in Package 1	1
Package 3 Width	30.0 cm
Package 3 Weight	3.9 kg
Package 2 Width	6.0 cm
Package 2 Height	22.0 cm
Package 2 Weight	360.0 g
Number of Units in Package 3	100
Unit Type of Package 3	S03
Package 3 Height	30.0 cm
Package 3 Length	40.0 cm
Package 1 Width	4.7 cm

Package 1 Height	1.0 cm
Package 1 Weight	36.0 g
Number of Units in Package 2	10
Unit Type of Package 2	BB1
Package 2 Length	23.0 cm

Offer Sustainability

REACH Regulation	REACH Declaration
REACH free of SVHC	Yes
EU RoHS Directive	Compliant EU RoHS Declaration
Toxic heavy metal free	Yes
Mercury free	Yes
RoHS exemption information	Yes
China RoHS Regulation	China RoHS declaration Pro-active China RoHS declaration (out of China RoHS legal scope)

Contractual warranty

Warranty	18 months
----------	-----------